



Sales Information Pack

www.cresswellhomefarm.co.uk





Cresswell Home Farm Specifications

Properties at Cresswell Home Farm have been created to provide a high quality and space efficient living environment.

For your comfort and convenience, all homes have:

- A luxury fitted kitchen
- Stylish bathrooms with shower and bath
- Heated towel rails to bathrooms
- Recessed spot lighting to some rooms
- Decorative coving to some rooms
- Panelled doors throughout
- Country-style ironmongery
- Security alarm
- BT phone sockets ready for you to connect
- Broadband
- Neutral colours to walls and ceilings
- Radiators and under floor heating from the on-site Biomass heating system which burns wood pellets. Each home has full control system
- A hot water supply from the Biomass system
- A heating and hot water meter to measure consumption
- Two dedicated parking spaces
- Landscaped gardens and fencing
- A dedicated bin store securely fenced off



Pricing Schedule

	Sq ft	Style	Position	Beds	Baths	Price
Unit 1 - The West Grange	1,614	Bungalow	End Terrace	3	2	SOLD
Unit 2 - West Barn	1,711	2 Storey	Mid Terrace	4	2	SOLD
Unit 3 - The Granary	2,077	2 Storey	Mid Terrace	4	2	SOLD
Unit 4 - The Threshing Barn Our Show Home	1,626	2 Storey	Mid Terrace	4	2	SOLD
Unit 5 - The East Grange	1,636	2 Storey	Mid Terrace	3	3	SOLD
Unit 6 - The Smithy	1,453	2 Storey	End Terrace	2	2	SOLD
Unit 7 - The North Barn	742	Bungalow	Wing	2	1	SOLD
Unit 8 - The Engine House	1519	2 Storey	Wing	3	3	£295,000
Unit 8a - The Dovecote	702 tbc	2 Storey	Tower	2	2	POA
Unit 9 - Long Barn West	1,819	2 Storey	End Terrace	5	2	£335,000
Unit 10 - Long Barn East	1,829	2 Storey	Mid Terrace	4	2	£329,000
Unit 10a - The Stables	600 tbc	Bungalow	End Terrace	1	1	POA

For more information call Urban Base on 08456431186

Prices are indicative and for guidance only. Prices correct at time of print 23rd Decemer 2016
 Sizes as provided by the developer 12th August 2015.

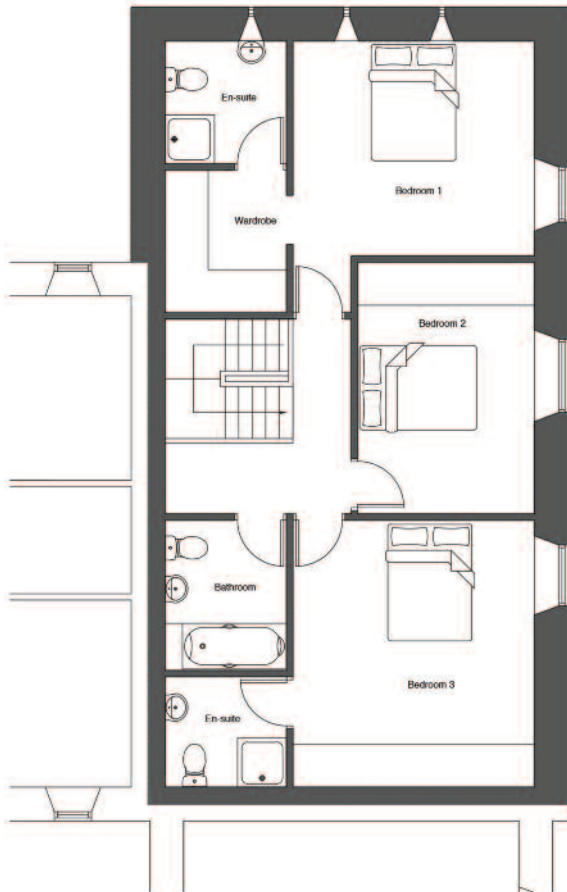


Unit 8 The Engine House

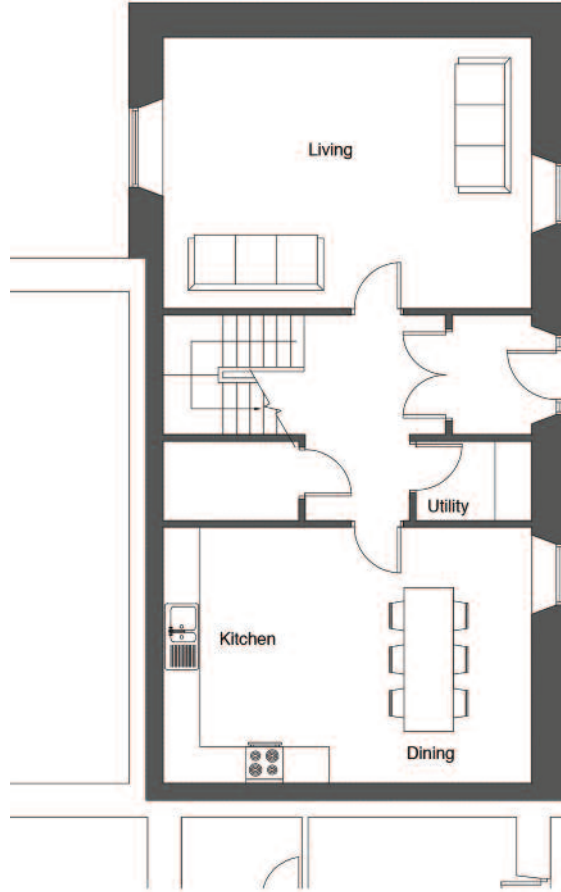
3 Bedroom Barn



FIRST FLOOR



GROUND FLOOR

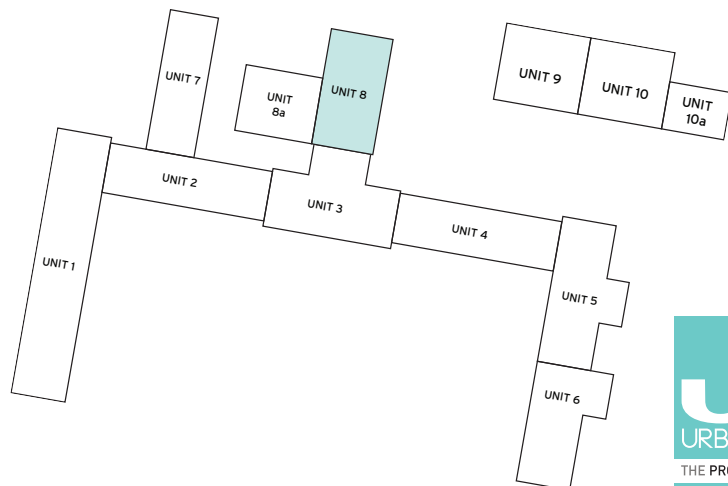


FIRST FLOOR ROOM SIZES

Bathroom	2.4m x 1.9m
Bedroom 1	3.9m x 3.5m
Ensuite	2.0m x 1.9m
Wardrobe	2.3m x 1.9m
Bedroom 2	4.1m x 2.8m
Bedroom 3	3.9m x 4.3m
Ensuite	1.9m x 1.8m

GROUND FLOOR ROOM SIZES

Kitchen & Dining	6.0m x 4.1m
Living	6.0m x 4.4m



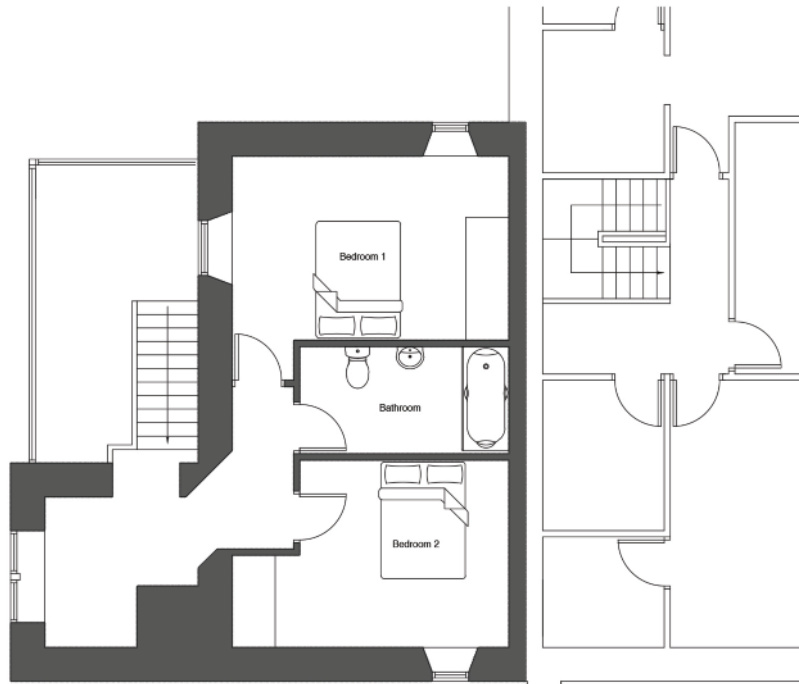
All dimensions are approximate



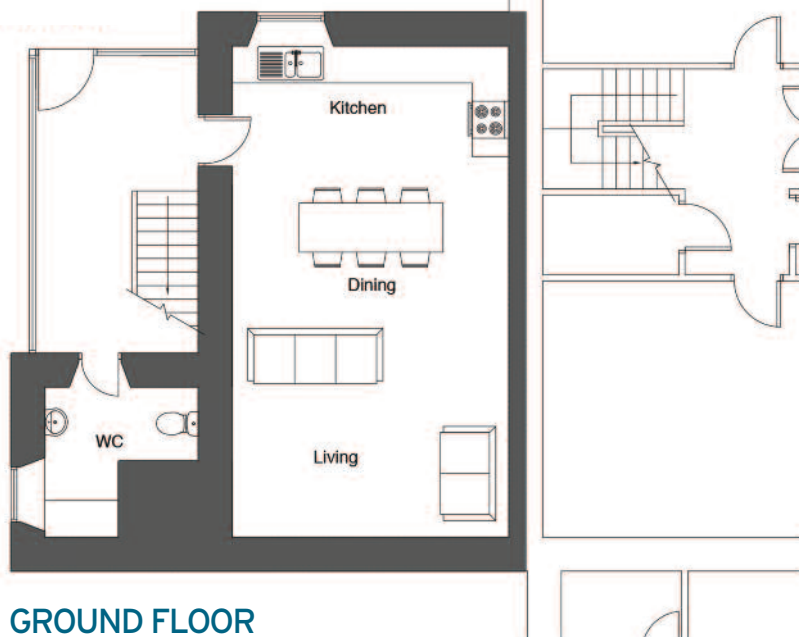
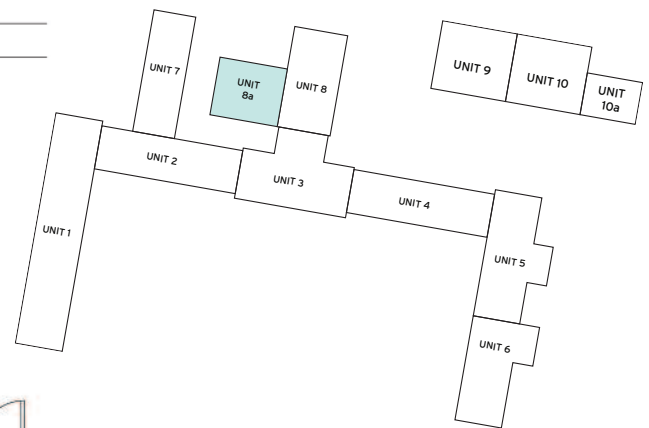
For more details call Urban Base on 0845 643 1186

Unit 8a The Dovecote

2 Bedroom Dovecote



FIRST FLOOR



GROUND FLOOR

FIRST FLOOR ROOM SIZES

Bathroom	3.4m x 1.7m
Bedroom 1	4.5m x 3.0m
Bedroom 2	4.5m x 3.0m

GROUND FLOOR ROOM SIZES

Kitchen, Dining, Living 8.0m x 4.5m

All dimensions are approximate



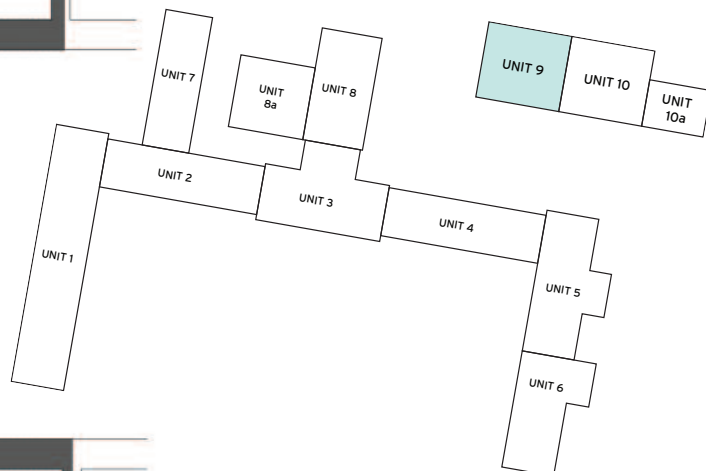
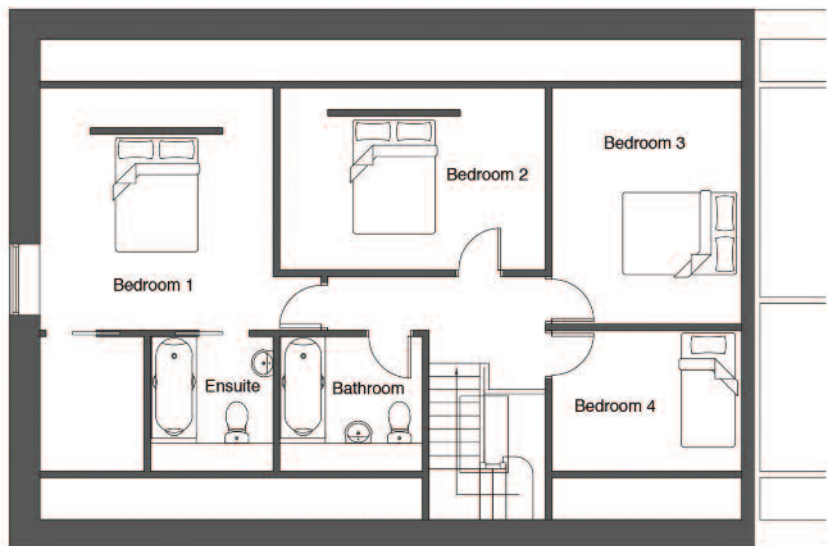
For more details call Urban Base on 0845 643 1186

Unit 9 Long Barn West

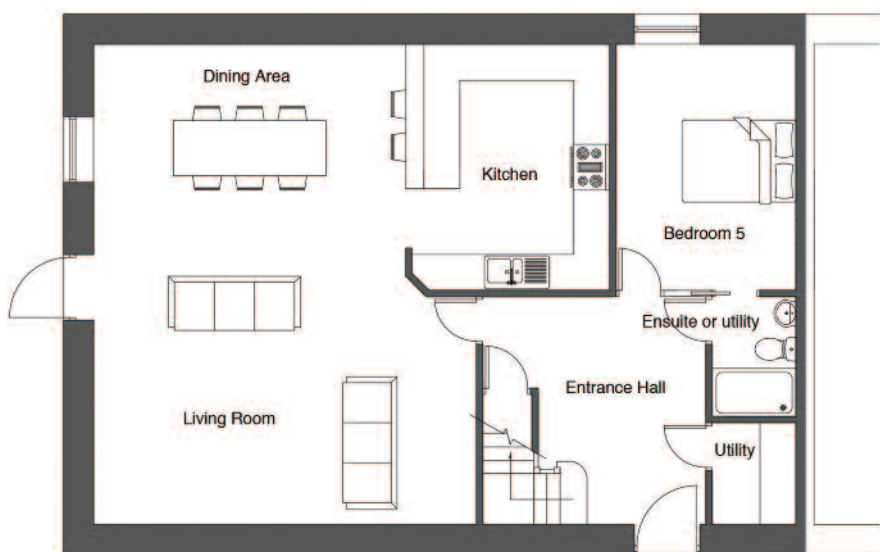
5 Bedroom Barn



FIRST FLOOR



GROUND FLOOR



FIRST FLOOR ROOM SIZES

Bathroom	2.3m x 2.2m
Bedroom 1	4.0m x 3.8m
Ensuite	2.0m x 2.2m
Bedroom 2	4.4m x 3.0m
Bedroom 3	3.1m x 3.9m
Bedroom 4	3.1m x 2.3m

GROUND FLOOR ROOM SIZES

Living & Dining	8.0m x 6.3m
Kitchen	4.1m x 3.4m
Bedroom 5	4.1m x 3.0m



All dimensions are approximate

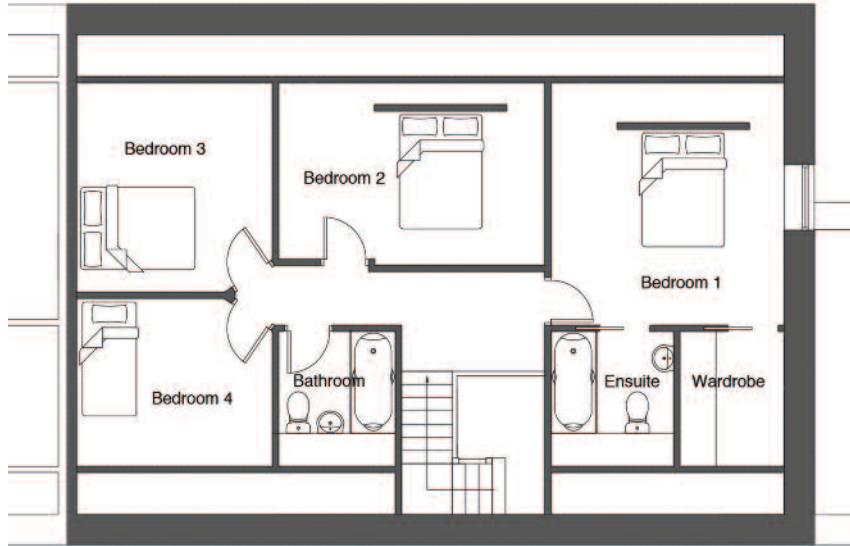
For more details call Urban Base on 0845 643 1186

Unit 10 Long Barn East

4 Bedroom Barn



FIRST FLOOR



FIRST FLOOR ROOM SIZES

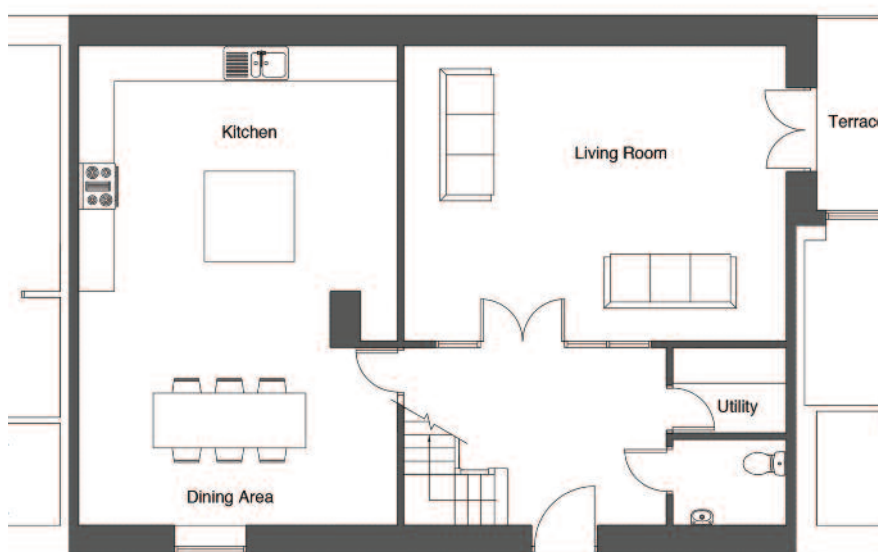
Bathroom	2.2m x 1.9m
Bedroom 1	4.0m x 3.8m
Wardrobe	2.2m x 1.7m
Ensuite	2.0m x 1.7m
Bedroom 2	4.4m x 2.9m
Bedroom 3	3.4m x 3.2m
Bedroom 4	3.2m x 2.7m

GROUND FLOOR ROOM SIZES

Kitchen & Dining	8.0m x 5.3m
Living Room	6.3m x 4.9m



GROUND FLOOR



All dimensions are approximate



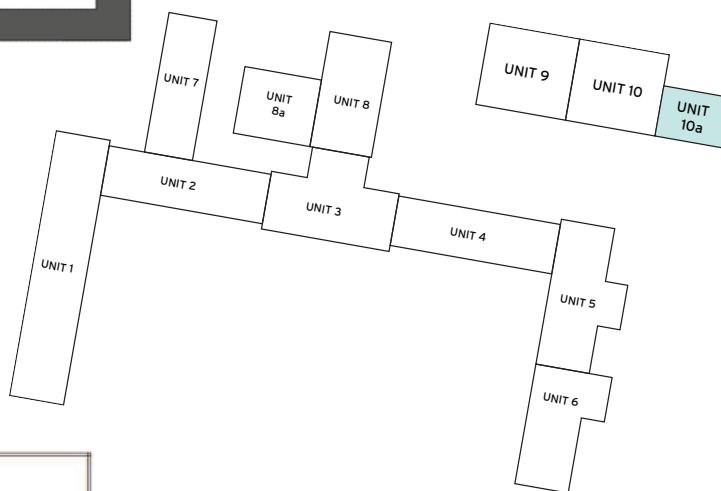
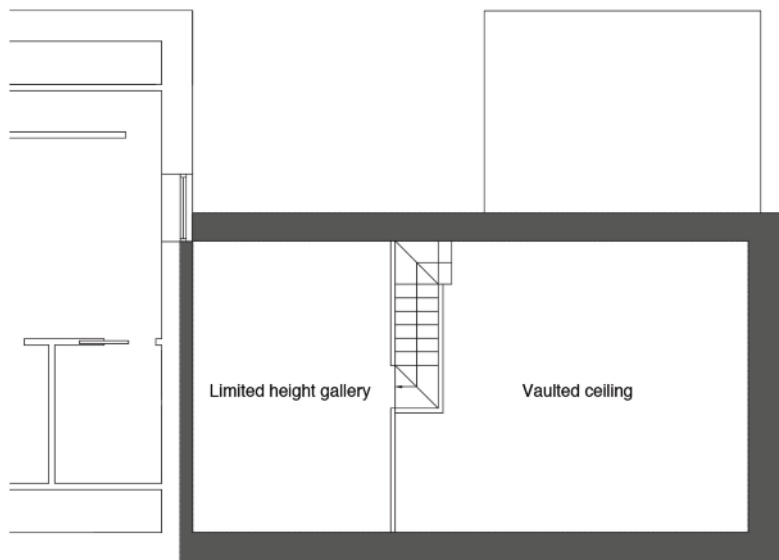
For more details call Urban Base on 0845 643 1186

Unit 10a The Stables

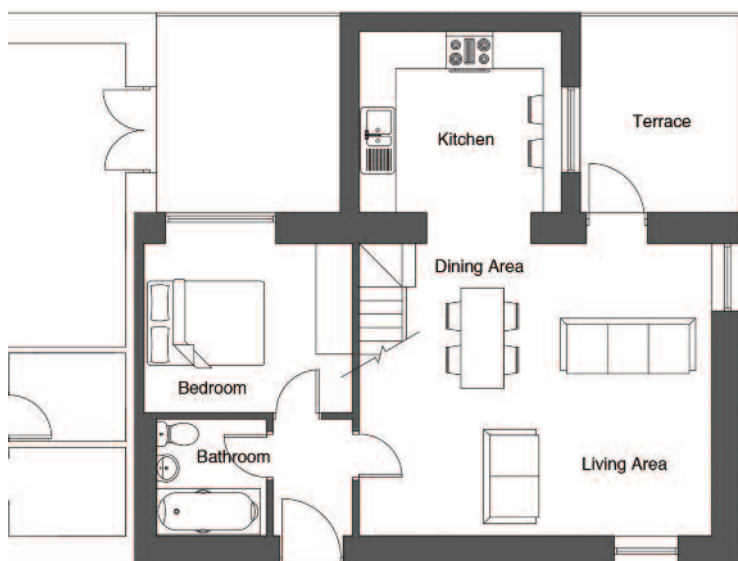
1 Bedroom Barn



FIRST FLOOR



GROUND FLOOR



FIRST FLOOR ROOM SIZES

Gallery 4.7m x 3.2m

GROUND FLOOR ROOM SIZES

Living & Dining 5.7m x 4.7m

Kitchen 3.3m x 2.9m

Bathroom 1.9m x 1.8m

Bedroom 2.7m x 3.4m



All dimensions are approximate

For more details call Urban Base on 0845 643 1186